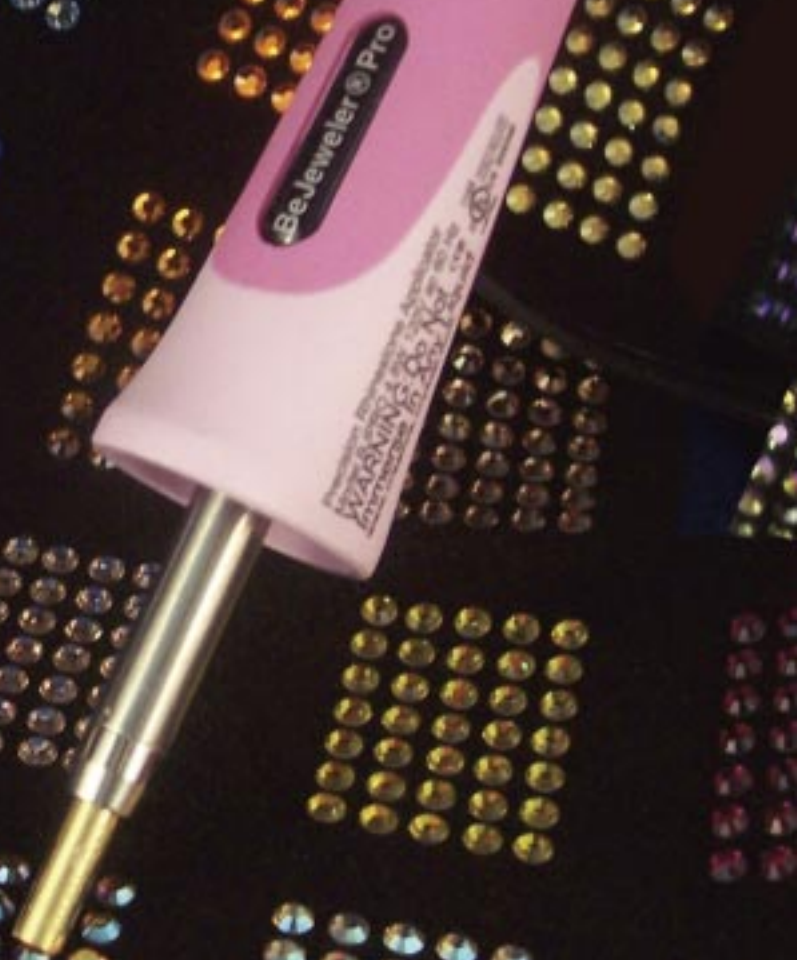


Add Rhinestones in Seconds!



Creative Crystal[®]
www.creativecrystal.com

BeJeweler[®] Manufacturer
Swarovski[®] Hot Fix Rhinestone Specialists

The Original Hot Fix Applicator

FOR USE WITH SWAROVSKI® HOT-FIX CRYSTAL RHINESTONES

THE GLUE IS ALREADY ON THE CRYSTALS...



SEE WEBSITE FOR:

- * New Products
 - * Special Offers
 - * Decorating Tips & Ideas
- www.creativecrystal.com



Both models feature laser etched tips for easy size identification

Deep, secure support stand

BEJEWELER® PRO

Professional Model Pink #BJPROP \$26.95

Attractive, comfortable, ergonomic, soft, design patented handle makes extended use a pleasure.

Universal electric will work in any country without a voltage adapter.

(May require specific wall plug adapter.)

Features:

- Oval shaped handle - Tool will not roll off work surface
- Flared handle keeps fingers from touching tip
- Short barrel for less hand stress and accurate crystal placement
- 5 year warranty
- UL, CUL and CE approvals

Includes:

- Rhinestone tips (8) in the following sizes: (for round rhinestones) 2mm, 2.5mm, 3mm, 4mm, 5mm, 6mm & 7mm
- Hot Spot tip to apply all (other) sizes/shapes
- Matching pink cleaning brush
- Deep, secure support stand
- Detailed 2 page instruction/pattern sheet

BEJEWELER® STONE STYLER™

Craft Model Red #BJSSR \$16.95

This attractive, electric tool is our less expensive alternative to the BeJeweler Pro®.

Difference between Pro model and Stone Styler:

- Handle design
- Stone Styler® does not feature Universal Electric.

Features:

- Flared handle keeps fingers from touching tip
- Short barrel
- 5 year warranty
- UL and CUL approvals

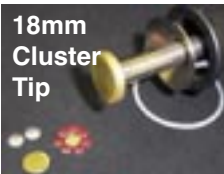
Includes:

- Rhinestone tips (8) in the following sizes: (for round rhinestones) 2mm, 2.5mm, 3mm, 4mm, 5mm, 6mm & 7mm
- Hot spot tip to apply all (other) sizes/shapes
- Deep, secure support stand

BEJEWELER® Tips

SIZE	ITEM #	PRICE
2mm / 6ss	6sstip	1.99
3mm / 10ss	10sstip	1.99
4mm / 16ss	16sstip	1.99
5mm / 20ss	20sstip	1.99
6mm / 30ss	30sstip	1.99
7mm / 34ss	34sstip	1.99
5mm Hot Spot	HOTSPOT	1.99
7mm Hot Spot	34SSHOTSPOT	2.99
18mm Cluster	CLUSTER	6.99
Tip Set*	TIPS	8.99

*includes 6ss, 10ss, 16ss, 20ss, 30ss & 34ss tips
Use Hot Spot Tips to apply all hot fix metals and jewels.



Group iron-on trims together and apply quickly with the Cluster Tip for a pave' look or any time you want to apply multiple hot fix trimmings instantly.

BEJEWELER® BRUSH #BRUSH \$2.29

Sturdy wire brush keeps BeJeweler® tips clean. Brush excess glue from tip while tool is hot. Black handle.



PRECISION TWEEZERS #TWEZ \$4.79

Pick up rhinestones and trims of all sizes quickly and easily. Made of carbon steel.

HUNI POT #HUNIPOT \$4.99

Clear crystal cylinder holds a treasure trove of beeswax beads. Place a bead on the enclosed stick and massage the wax with your fingers to warm until it adheres to the end of the stick. Use to pick up small objects. One small jar will last a long, long time.

RHINESTONE PICKUP STICK #PICSTIK \$3.49

The simple way to pick up crystals and small objects. Requires no glue or special procedures. Just place the pink end on top of the crystal and push down firmly.

RHINESTONE KITS

BEJEWELER® STONE STYLER™ KIT

10SS RAINBOW KIT #RB10KIT \$28.95

- BeJeweler® Stone Styler™
- 3mm (10ss) Rainbow Compact (total 144 pcs)
- Hot Dot Booklet (see description transfer patterns, books & supplies)

16SS RAINBOW KIT #RB16KIT \$34.99

- BeJeweler® Stone Styler
- 4mm (16ss) Rainbow Compact*
- Hot Dot Booklet (see description transfer patterns, books & supplies)

BEJEWELER® PRO KITS

LUXURY A/B KIT #PROPCAB \$46.95

- BeJeweler® Pro
- Aurora Borealis Compact*
- 4 pages of designs

CLASSIC KIT #CLASSIC \$74.95

Save \$35

- BeJeweler Pro Pink
- Hot Dot book (see description transfer patterns, books & supplies)
- Diamond Crystal Compact
- 5mm Rainbow Compact
- 100 pcs clear diamond 10ss
- 100 pcs 16ss clear diamond
- 100 pcs 16ss color mix
- 18 pcs 34ss color mix

CRYSTAL CLEAR KIT #CRKIT \$44.99

- BeJeweler® Pro
- 4mm (16ss) Rainbow Compact*
- Hot Dot Booklet

NOTE: See compact descriptions below. We reserve right to replace any out of stock item for the equivalent or higher value item.

DELUXE HOT FIX TRANSFER KIT #CDKIT \$149.50

SAVE OVER \$18 ON OUR LARGEST TRANSFER KIT WITH 1,618 SWAROVSKI HOT FIX CRYSTALS! YOU RECEIVE:

- CD with over 120 pages of transfer patterns. Includes detailed, easy to follow directions
- One Step transfer pen
- Precision tweezers
- 6 Small transfer film sheets
- Swarovski 100 pc packs: 2 clear diamond 3mm, 1 A/B 3mm, 1 Citrine 3mm, 1 Light Siam Red 3mm, 1 Sahara 3mm, 1 Rose 3mm, 1 Sapphire 3mm, 1 Tanzanite 3mm, 1 Clear Diamond 3.5mm, 1 A/B 3.5mm, 2 Clear Diamond 4mm, 1 A/B 4mm, 1 Jonquil 4mm, 1 Olivine 4mm, 1 Light Rose 4mm
- 1 Color Mix 7mm (18 pcs)

GLITZ KIT #GLITZ \$73.99

- BeJeweler Pro Pink
- Romance & the Arts Pattern Book
- One Step Pen
- 3mm (10ss) Sheer Luxury A/B Color Compact (144 pc total)
- 4mm Custom A/B Color Compact (132 pc total)
- MIX34 - 18 pcs of 7mm / 34ss assorted color mix
- PM16AB - 100 pcs (Rose & Lt Rose Pink A/B crystals)
- COP20 - 100 pcs. Rich Copper crystals

How to Turn Your Hobby into a Profitable Business

Many of our customers have started their own business by reselling our products and embellishing items for resale. It's easy and fun!

Great guide for starting your own business. This is a portable document file that is sent by email. Please include your email address when ordering. #HOWTOPDF \$6.95



CAROUSEL CRYSTAL COMPACTS

The most attractive, convenient storage unit possible. Each round container has 12 compartments. Perfect for rhinestones and small items. Top rotates to allow you to easily remove exactly the amount needed then reseals tightly. Reusable, very high quality carousel.

CLEAR CRYSTAL DIAMOND COMPACT #NCRCOM \$21.99

Contains 120 pcs. of 10ss, 24 pcs. of 16ss, 12 pcs. of 20ss and 3 pcs. of 30ss clear "diamond" hot-fix crystals. Total of 159 Swarovski® hot-fix crystals.

A/B COMPACT #NABCOM \$22.99

Contains 120 pcs. of 10ss, 24 pcs. of 16ss, 12 pcs. of 20ss and 3 pcs. of 30ss Swarovski® Aurora Borealis hot-fix crystals. Total of 159 Swarovski® hot-fix crystals.

3MM (10SS) RAINBOW COMPACT #16SSRAIN \$17.99

Contains 12 pcs. each of the most popular colors plus 12 classic clear crystal rhinestones. Total of 144 Swarovski® hot fix crystals.

4MM (16SS) RAINBOW COMPACT #16SSRAIN \$21.99

Contains 10 pcs. each of 11 popular Swarovski rhinestone colors plus 12 classic clear crystal rhinestones. Total of 122 Swarovski® hot fix crystals.

4MM (16SS) LUXURY A/B COMPACT #NCABCOM \$23.99

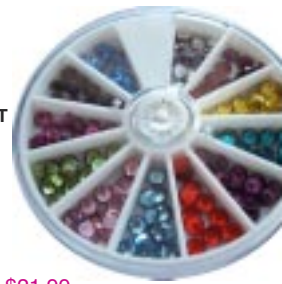
Contains 12 pcs. each of 11 popular Swarovski rhinestone colors plus 12 color A/B Swarovski® hot fix crystals. Total of 144 pcs. / 1 gross.

5MM (20SS) RAINBOW COMPACT #H20R \$21.99

Contains 8 pcs. each Citrine, Light Sapphire, Rose, Tanzanite, Emerald, Amethyst, Clear, Siam, Peridot, Sapphire, Sun and Light Rose. Total of 96 Swarovski® hot fix crystals.

JEWEL COMPACT #JEWELCOM \$18.95

Each of the twelve compartments contain an jewel cut Swarovski® rhinestone, pearls and / or ringed roses (clear diamond rhinestones with gold or silver rims). A great value and perfect way to try these beautiful gemstones.



Creative Crystal introduced hot fix technology to the public in 1984. The debut of the original hot fix applicator, BeJeweler, was a decade later. Since then, the company has led this industry and continues to develop innovative hot fix technology and concepts. The Company is dedicated to providing the best products, service and prices possible. Your comments and recommendations are vital to our improvement and growth. Finest quality products since 1986.

Creative Crystal Company

100 North Washington Blvd #101, Sarasota, FL 34236

941.331.4321 • FAX 941.331.4344

www.creativecrystal.com



TRANSFER PATTERNS, BOOKS & SUPPLIES



HOT DOT CRYSTALS #HDC \$7.49

Twenty six (26) projects ranging from cell phones to bridal wear. Lots of fun for all ages. Includes all directions and patterns.

TRANSFER PEN

#ONESTEP \$6.95

Blue ink marks through uncoated paper then washes out. Opens on either end. Great for use with pattern books. Perfect for use with the BeJeweler®



SILICONE TRANSFER FILM

Finest quality silicone transfer film. Use to hold embellishments firmly and does not leave residue on fabrics. Film is heat resistant, totally clear and sticky on one side only.

Small Size 9" x 12" #TRFILM \$3.79

Large Size 12.5" x 24" #LGFILM \$4.59

Full Roll* #SFR \$289.00

*Approx 200 meters x 31.75 cm / 650' x 13"



PTFE (TEFLON®) SHEETS #SMPTFE \$8.99

Flexible heat resistant sheet for use with household irons and heat presses. Protects heat surfaces and fabrics. Place between layers of thin fabric when applying hot fix trimmings;

use underneath fabrics to help set embellishments, use to protect the surface of the item being decorated. Highly durable. Can be cut to size as desired. Size 9" x 10"

Rhinestone Pick Stick #PICSTIK \$4.59

The simple way to pick up crystals and small objects. Requires no glue or special procedures. Just place the pink end on top of the crystal and push down firmly. Lift and your crystal will be on the tip of the Stik. Attractive sparkle handle with bright pink tip.

Display #DCASE \$16.95

Eye catching clean, crisp modern design with angled low front and high back, shows off your cylinders to the max. High quality clear acrylic display comes with 12 cylinders (crystals not included). Size is 8" wide x 5" deep, 3" high in back.

Display with 1,200 crystals

Save \$25.00 #RBDISP \$97.95

This beautiful display case contains a rainbow collection of the 6 most popular colors in 3mm and 4mm hot fix Swarovski crystals in crystal clear gem jars.



Crystal Clear Gem Jar

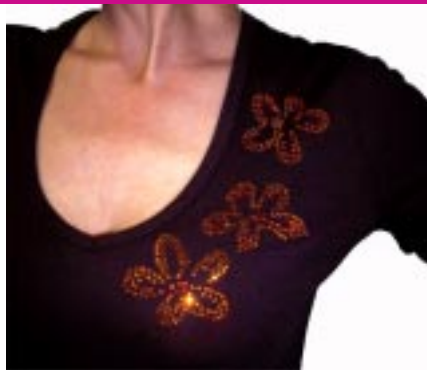
5 Pc. #CYL \$3.29

Perfect way to organize rhinestones and other small objects (includes blank labels). This high quality clear plastic cylinder is 1" in diameter x 3/4" high. Pack of 5 empty Gem Jars includes 5 blank round labels.



Transfer Patterns

Dot pattern designs for use with iron-on trimmings, paints, etc. Complete instructions included. Number of designs and size varies. Use with One Step Transfer Pen and BeJeweler® or with Transfer Film.



Transfer Pattern CD

#PATCD \$19.95

Largest collection ever assembled. Over 120 pages. Just choose the design you want and print as often as you like. Includes a variety of complete alphabets for names, monograms,

etc. For use with transfer film or transfer pencil and BeJeweler®. Combine with paints and other embellishments as desired. Copyrighted for personal use only. Designs cannot be sold or reproduced for sale however items embellished using these designs can be resold. Complete directions included.

Individual Patterns

You can purchase these online and download immediately - no shipping. Purchase from this catalog and you will receive a printed pattern (shipping cost for mailed versions). Order by name. Most of these designs are not on the CD. \$1.39 each

Astrology

Aries
Cancer
Capricorn
Gemini
Leo
Libra
Pisces
Sagittarius
Scorpio
Taurus
Virgo
Zodiac (all symbols)

Birds and Butterflies

Butterfly
Cockatoo
Eagle
Swallow

Bridal / Romance

Bride (word) & Wedding Bands
Hearts (word) LOVE
Hearts w/Arrow, Groups of Hearts

Animals

Bunny
Elephant
Giraffe
Horse (head)
Iguana
Large Horse
Penguin
Pony
Prancing Horse
Rearing Horse
Show Horse
Stallion (head)
Swan

Christmas

Angels (two, small)
Christmas Ornaments
Classic Angel w/Halo
Christmas Trees (row)
Felix Navidad (word)
Frohe Weihnachten (words - Merry Christmas in German)
Frosty the Snowman
Snowman w/Stars
Joyeux Noel (words)
Merry Christmas (words)
Natale Hilare (words - Merry Christmas in Latin)
Poinsettia
Reindeer in Frame (8 1/2 x 11")
Modern Reindeer
Reindeer w/Sleigh & Xmas (word)
Snowflakes (3)
Traditional Christmas Tree
Merry Christmas (words in Old English type font) w/Nativity Star
Martini (see back cover)
Martini (glass)

Dogs / Cats

Bull Dog
Chihuahua
Dalmatian Pup
Daschund

Doberman

Dog Bone
Fat Cat
Fluffy Puppy
Greyhound
Happy Siamese Cat
Happy Puppy (face)
Hound Dog
Labrador
Spotted Pup
Maltese
Dog Paw Print
Poodle
Pug (face)
Pug (full body)
Puppy Dog
Scotty
Sheppard
Siamese (elegant)
Wolf
St. Bernard
Yorkie

Western

Coyote with Cactus and Mountains
Kokopelli

Misc.

Apple Tree
Dragon (Flying)
Dragon (Serpent)
Peace Sign

New Patterns

New designs are being added to our website. Please go to creativecrystal.com to see the newest items and online sale specials.



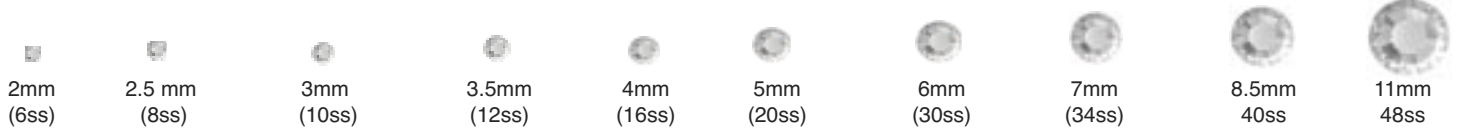
SWAROVSKI® COLORS

Swarovski® Flat Back Hot Fix Crystals

Packaged in convenient 100 piece packages or 10 gross bulk (1,440 pcs.). Hot fix flat back crystals are interchangeable with foil back rhinestones and will actually adhere better with external glue than plain foil back crystals.

Clear “Diamond” Crystals

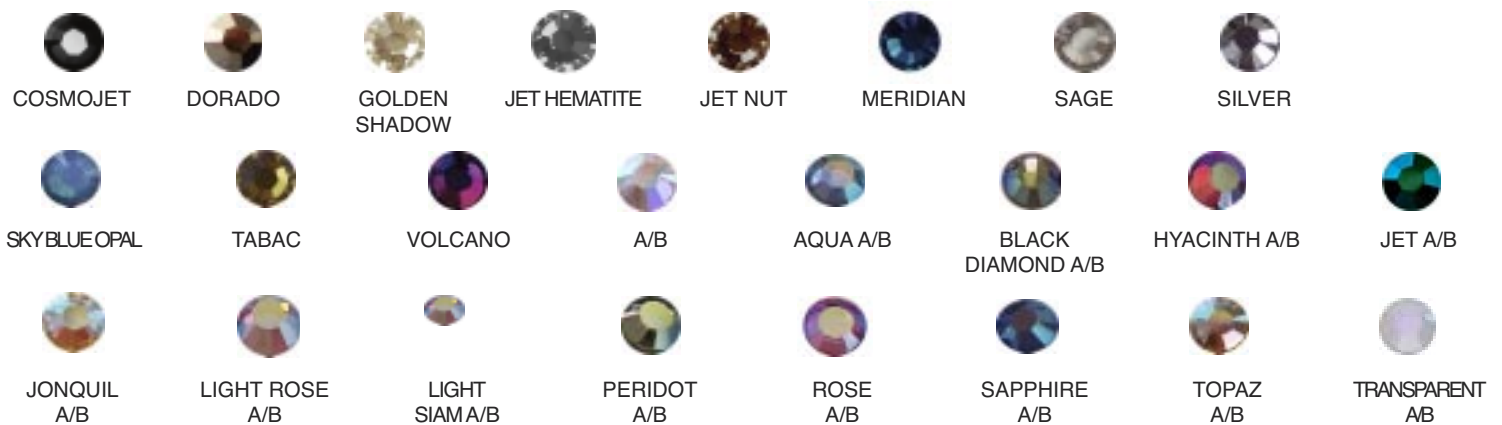
SIZE CHART - SHOWN AS CLOSE TO ACTUAL SIZE AS POSSIBLE



Standard Swarovski® Rhinestone Colors



Swarovski® Special Effect & A/B Colors



Swarovski® Hot Fix Jewels



SWAROVSKI® HOT-FIX CRYSTALS

CHOICE OF 100 PC CYLINDERS OR 10 GR BULK PACKS

SIZE 2MM / 6ss

COLOR	QUANTITY	PRICE	QUANTITY	PRICE
Clear Diamond	100 pcs	6.39	10 gr (1,440 pcs)	45.49
Colors (regular)	100 pcs	7.29	10 gr (1,440 pcs)	51.89
A/B	100 pcs	7.99	10 gr (1,440 pcs)	57.89
A/B Colors	100 pcs	8.59	10 gr (1,440 pcs)	63.79

SIZE 2.5MM / 8ss

COLOR	QUANTITY	PRICE	QUANTITY	PRICE
Clear Diamond	100 pcs	6.69	10 gr (1,440 pcs)	48.49
A/B	100 pcs	7.69	10 gr (1,440 pcs)	58.79

SIZE 3MM / 10ss

COLOR	QUANTITY	PRICE	QUANTITY	PRICE
Clear Diamond	100 pcs	6.39	10 gr (1,440 pcs)	45.49
Colors (regular)	100 pcs	7.29	10 gr (1,440 pcs)	51.89
A/B	100 pcs	7.99	10 gr (1,440 pcs)	57.89
A/B Colors	100 pcs	8.59	10 gr (1,440 pcs)	63.79

SIZE 3.5MM / 12ss

COLOR	QUANTITY	PRICE	QUANTITY	PRICE
Clear Diamond	100 pcs	6.99	10 gr (1,440 pcs)	52.79
A/B	100 pcs	9.79	10 gr (1,440 pcs)	67.49

SIZE 4MM / 16ss

COLOR	QUANTITY	PRICE	QUANTITY	PRICE
Clear Diamond	100 pcs	9.95	10 gr (1,440 pcs)	72.49
Colors (regular)	100 pcs	10.49	10 gr (1,440 pcs)	79.59
A/B	100 pcs	12.79	10 gr (1,440 pcs)	102.95
A/B Colors	100 pcs	13.59	10 gr (1,440 pcs)	104.95

SIZE 5MM / 20ss

COLOR	QUANTITY	PRICE	QUANTITY	PRICE
Clear Diamond	100 pcs	13.29	10 gr (1,440 pcs)	102.95
Regular Colors	100 pcs	13.99	10 gr (1,440 pcs)	112.29
A/B	100 pcs	16.99	10 gr (1,440 pcs)	133.29
A/B Colors	100 pcs	18.59	10 gr (1,440 pcs)	146.49

SIZE 6MM / 30ss

COLOR	QUANTITY	PRICE	QUANTITY	PRICE
Clear Diamond	18 pcs	4.89	1 gr (144 pcs)	28.29
A/B	18 pcs	5.89	1 gr (144 pcs)	34.99

SIZE 7MM / 34ss

COLOR	QUANTITY	PRICE	QUANTITY	PRICE
Clear Diamond	6 pcs	1.95	1 gr (144 pcs)	28.29
Regular Colors	6 pcs	2.19	1 gr (144 pcs)	31.59
A/B	6 pcs	2.29	1 gr (144 pcs)	36.29
A/B Colors	6 pcs	2.35	1 gr (144 pcs)	38.95

SIZE 8MM AND LARGER

SIZE / COLOR	QUANTITY	PRICE	QUANTITY	PRICE
8.5mm Clear	4 pcs	2.49	72 pcs	44.95
8.5 A/B	4 pcs	3.49	72 pcs	56.95
11mm Clear	2 pcs	2.79	72 pcs	94.79
8mm Chessboard	1 pc	1.49		

Jewels

COLOR	QUANTITY	PRICE	QUANTITY	PRICE
Baguette 2.5x5mm	12 pcs	3.29	100 pcs	18.79
Navette 2.5mm	12 pcs	4.99	100 pcs	29.99
Octagon 4x8mm	12 pcs	5.29	36 pcs	12.99
Pear 4.8x8mm	12 pcs	4.49	100 pcs	31.89
Square 4mm	12 pcs	1.99	36 pcs	5.29
Teardrop 6x10mm	12 pcs	5.89	N/A	
Chessboard 8mm	1 pc	1.49	6 pcs	7.59
Pearl 4mm	100 pcs	10.95	10 gr (1,440 pcs)	77.79
Gold Rim 4mm Clear	100 pcs	8.99	10 gr (1,440 pcs)	72.49

CRYSTAL CLEAR™ GEM GLUE #CCGLUE \$5.29

The best rhinestone glue ever. Non toxic, odorless and non-flammable, dries clear and holds on nearly every possible surface. Dries crystal clear. One oz. bottle. The perfect glue for difficult surfaces.

Using Glue with Hot Fix Rhinestones

Swarovski hot fix crystals can be used with prong settings and external glue exactly like any flat back rhinestones. When using with glue, these rhinestones will actually adhere better than plain foil back rhinestones. The hot fix glue backing on Swarovski crystals is textured and allows glues to "grab" more securely and prevent glue from touching the foil under this backing. The backs of non hot fix (foil back) rhinestones are totally smooth and non porous. Topical glue applied to these plain foil back rhinestones can cause a chemical reaction which repels the rhinestone so you end up with a "silver" dot where the rhinestone used to be attached. We have all seen garments like this on discount racks.

Swarovski hot fix glue is textured and this works to your advantage when used with glue. This hot fix backing forms a protective barrier between the external glue and the foil. The glue "grabs" onto the hot fix rhinestone more firmly. We recommend **Crystal Clear Gem Glue** (odorless, non toxic, non flammable) for most surfaces.

Note: Plastics are oil based and very rarely will hold even with the best glue. If you decorate certain items, it may void the warranty. Check with the manufacturer if in doubt. Expect some crystals to fall off from wear, etc. This is natural.

How to apply...

- 1) For metals, plastics, and non-porous surfaces, lightly sandpaper surface.
- 2) Clean surface with alcohol or detergent and dry thoroughly.
- 3) If making a design, mark lightly onto the surface and work on one small area at a time.
- 4) Use **Precision Tweezers** or **Pic Stik** to pickup rhinestones.
- 5) Allow the item to dry thoroughly before using. See glue directions for details.

For additional decorating ideas, tips and suggestions, please visit our website: www.creativecrystal.com.

Warning: Swarovski® Austrian crystal does contain a small amount of lead. Even though this is encapsulated within the glass, rhinestones are not recommended for use on items for children under 12 years of age.

SWAROVSKI COLOR CHART PERFECT MATCH CRYSTAL CHART #SCHART \$29.95

The solution for choosing the exact color / size you need. This clear binder has each color Swarovski® crystal rhinestone. Simply place the clear sheet over your fabric so you can determine exactly which color you want. This handy 8 1/2 x 11" chart is in an attractive clear binder.

Includes all available colors, sizes (in clear "diamond") and jewels cut crystals

RHINESTONE Size Chart

Millimeter	Stone Size	Inch	Qty per inch
2mm	6ss	.078	12 approx
3mm	10ss	.118	9 approx
4mm	16ss	.157	6 approx
5mm	20ss	.196	5 approx
6mm	30ss	.236	4 approx
7mm	34ss	.275	3.5 approx
8mm	40ss	.314	3 approx

Wholesale customers please register online and fax business license (941.331.4321) or email (crystal@creative-crystal.com).
You can also contact us directly at 941.331.4321 (EST M-TH)

HOW TO APPLY RHINESTONES

Swarovski Hot Fix Flat Backed Austrian Crystals

Swarovski invented "rhinestones" as well as the hot fix method of application. Prior to hot fix, rhinestones were applied with external glues, pronged settings or sewn on. Glues were temporary, not washable, very time consuming and messy. Prongs punctured the fabric causing permanent damage, rusted when cleaned and snagged on other surfaces as well as skin. Sewing was very timely and threads showing on the surface were unacceptable to high fashion garments. Swarovski hot fix crystals are flat backed with a heat sensitive glue backing that melts when heated and forms an extremely secure bond. They can be used with the BeJeweler, heat press, household iron or external glue. Choose the method according to the products you are embellishing. Application on rubber, plastics and hard leather is not recommended. Due to lead content, do not use on items for children under 12.

The BeJeweler®

The technology for this tool was developed for Swarovski. The purpose was to apply rhinestones to surfaces that could not withstand direct heat. This included hard surfaces (wood, buttons, etc) as well as the most delicate fabrics, velvets and other difficult surfaces. The rights to produce and sell in North and South America were given to Creative Crystal Company. The American tool was named BeJeweler and when Swarovski discontinued their tool, the BeJeweler sales expanded to worldwide. The BeJeweler comes with a full range of tips to apply the various size hot fix crystals and a hot spot tip to apply unusual shaped hot fix embellishments.

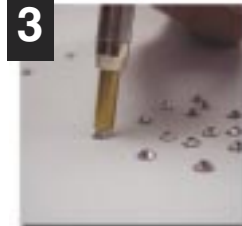
How it works...



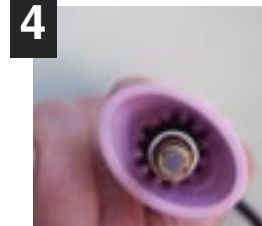
1 Place printed pattern over the item you want to decorate. Use **One Step Pen** to make a dot over each dot in pattern. Pen & Patterns available in this book.



2 Lift printed pattern and ink will appear on your item. Use BeJeweler to place a rhinestone over each dot.



3 Allow tool to preheat for approx 3-5 minutes. Place crystals face up and put tip gently over crystal.



4 Wait until the glue on the back of the crystal melts / begins to bubble.



5 Place the crystal exactly where desired. Lift up tip.

Transfer Designs / Motifs

Swarovski developed a method of creating designs made completely with hot fix rhinestones. This trend has been tremendously popular and are used extensively in the fashion industry. We have compiled the largest range of patterns on a convenient CD - over 120 pages. Order Pattern CD #PATCD. Choose the designs you want to make, print and follow directions below. You will find a large selection of **individual patterns** (not on this CD) in **this catalog and also on our website. Patterns can be purchased online and downloaded for immediate use.**

How to Make & Apply Designs with a Household Iron...

The process involves placing hot fix rhinestones on a heat proof transfer "film" (available in this catalog and online). This film is heat resistant and clear. One side has a sticky surface to hold the rhinestones in place when you create your design. The completed design is placed onto fabric and a household iron or heat press is used to bond the rhinestones to the fabric. The clear transfer film is then removed and discarded.

STEP 1



Tape the corners of your printed design to a hard, flat surface.

STEP 2



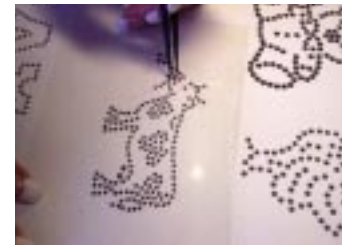
Cut transfer film slightly larger than the design. Peel off white backing.

STEP 3



Tape corners of the clear film (sticky side up toward you) over the printed design.

STEP 4



Place a rhinestone over each dot in your design. Glue side up facing you.

STEP 5



Pickup completed motif and make certain all rhinestones are in the right place.

STEP 6



Place completed design on your garment. Cover with a PTFE press sheet (Teflon) sheet.

STEP 7



Preheat iron* to correct temperature for your fabric. Place iron on top of press sheet for 12 - 15 seconds. repress for several seconds.

STEP 8



When cool to touch, slowly peel off clear film. If any rhinestones stick to film,

Heat Press

Follow directions that came with the press or contact the heat press manufacturer. You will also find a guide on our website at www.creativecrystal.com.

NOTES:

- For transfer motifs, use 3mm or 4mm crystals or combination of these smaller sizes
- To create a gradation of sizes, use 2mm, 2.5mm, 3mm, 3.5mm and 4mm
- When applied properly the garment can be gently laundered (turn inside out).
- For best results, use the same or similar size rhinestones for the entire transfer. When combining large and small crystals, iron on the smaller crystals first, then use the BeJeweler® to apply the larger crystals.

- For pave' look use 2mm, 2.5mm or 3mm crystals
- In general, 20ss, 30ss and 34ss are used for accents, stage and costuming
- Rhinestones do occasionally fall off, this is normal.



Creative Crystal[®] Company

www.creativecrystal.com

Swarovski[®] Hot Fix Rhinestone Specialists
Sarasota, Florida

